



# LINUS System Quickstart

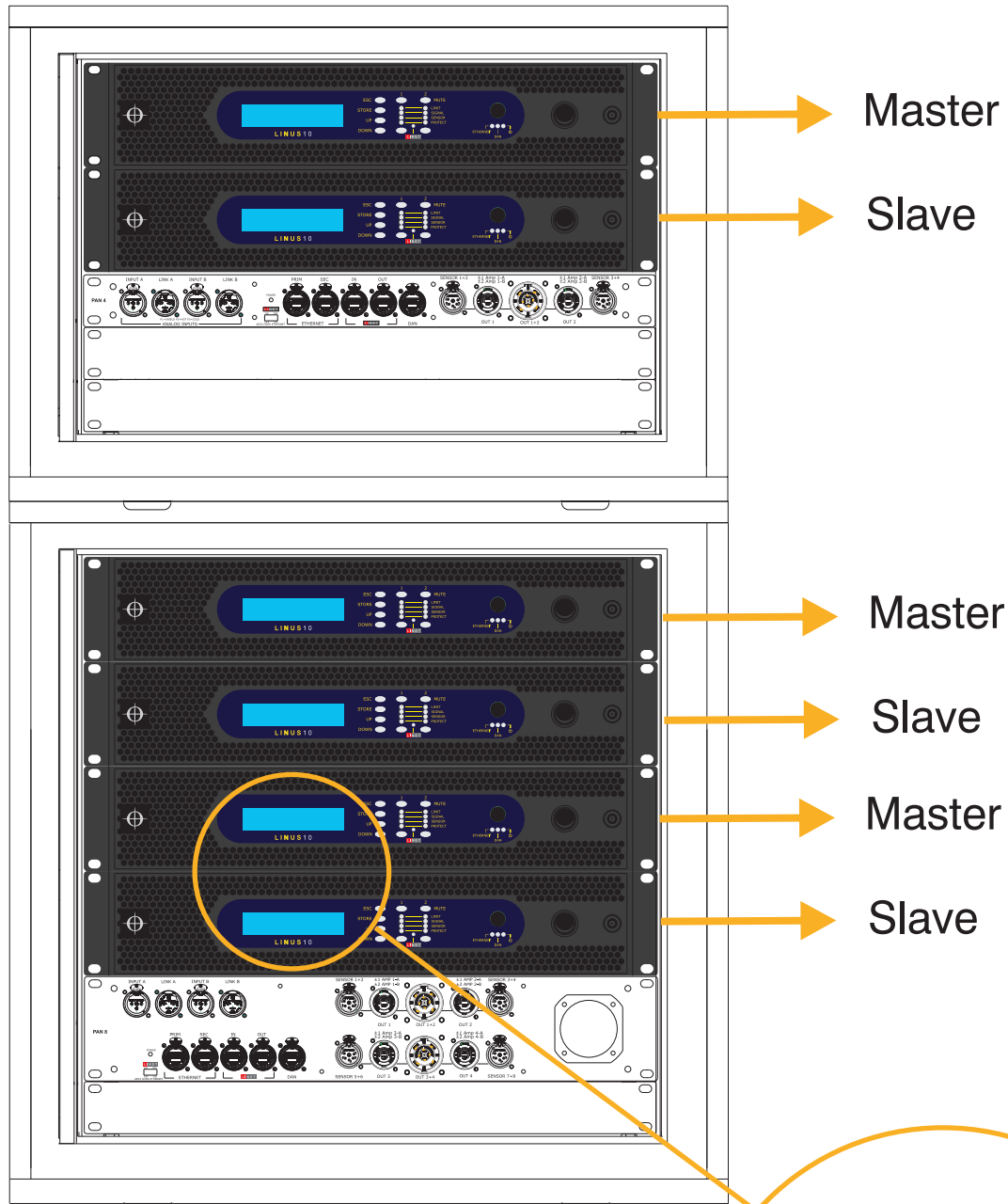
**LINUS Live v.1.2.2**

*2017\_07\_28*



## 1. Verify Master - Slave configuration in LINUS Rack 20/40

Start the Rack configuration before any frontpanel connected cables!



```

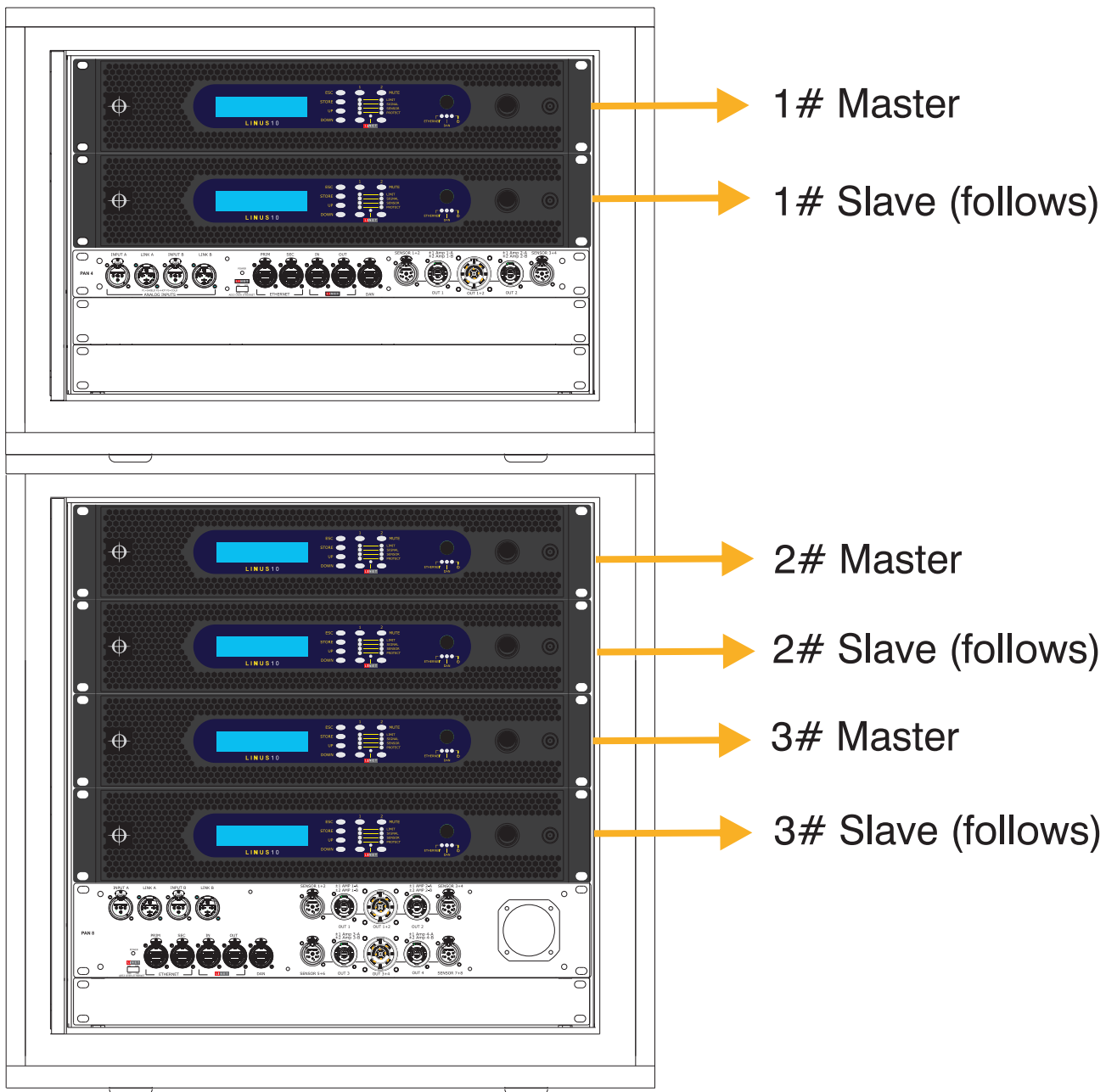
Linus10    Master    #03
P 14:ViRAY-A
I 1_LF  1_HF
G 0.0    0.0

Linus10    Slave    #03
P 14:ViRAY-A
I 1_LF  1_HF
G 0.0    0.0
    
```





## 2. Module Number assignment



After selecting the Module Number on the Master unit and entered the command, the Master Unit starts a device scan...and ends with a message „Device Found 1“ (this is the Slave unit). The Slave unit will automatically follow the Master unit. Doublecheck the IP address on the last page on the units displays.  
Module No. 1 example- Master: xxx.xxx.xx.01/ Slave: xxx.xxx.xx.02  
Module No. 2 example. Master: xxx.xxx.xx.11/ Slave: xxx.xxx.xx.12

*Shutdown the complete rack and wait for 5min if the Master/ Slave IP-Address structure is not in the right order and repeat the module number assignment*





## 1. Configure Network Structure

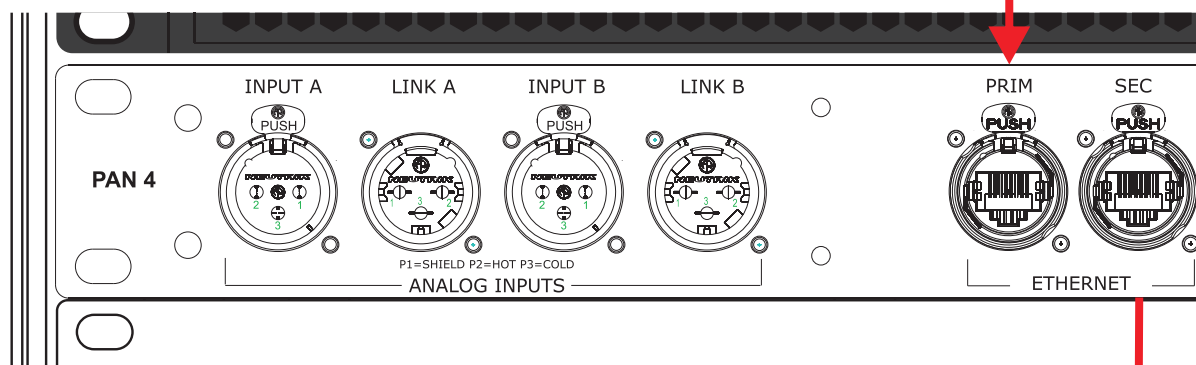
Wire your racks with ethernet cables (PRIM/ SEC)

Example shows Daisy Chain Topology (other Network topologies possible)

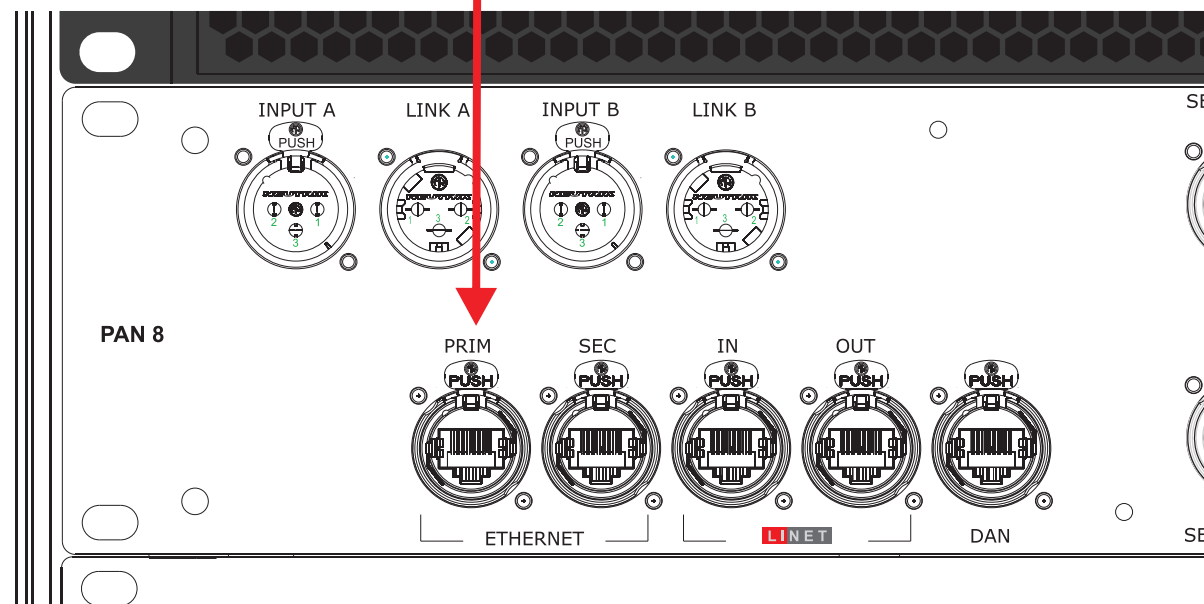
Set Static IP:  
IP:192.168.1.20  
SN: 255.255.0.0



### LINUS Rack 20



### LINUS Rack 40

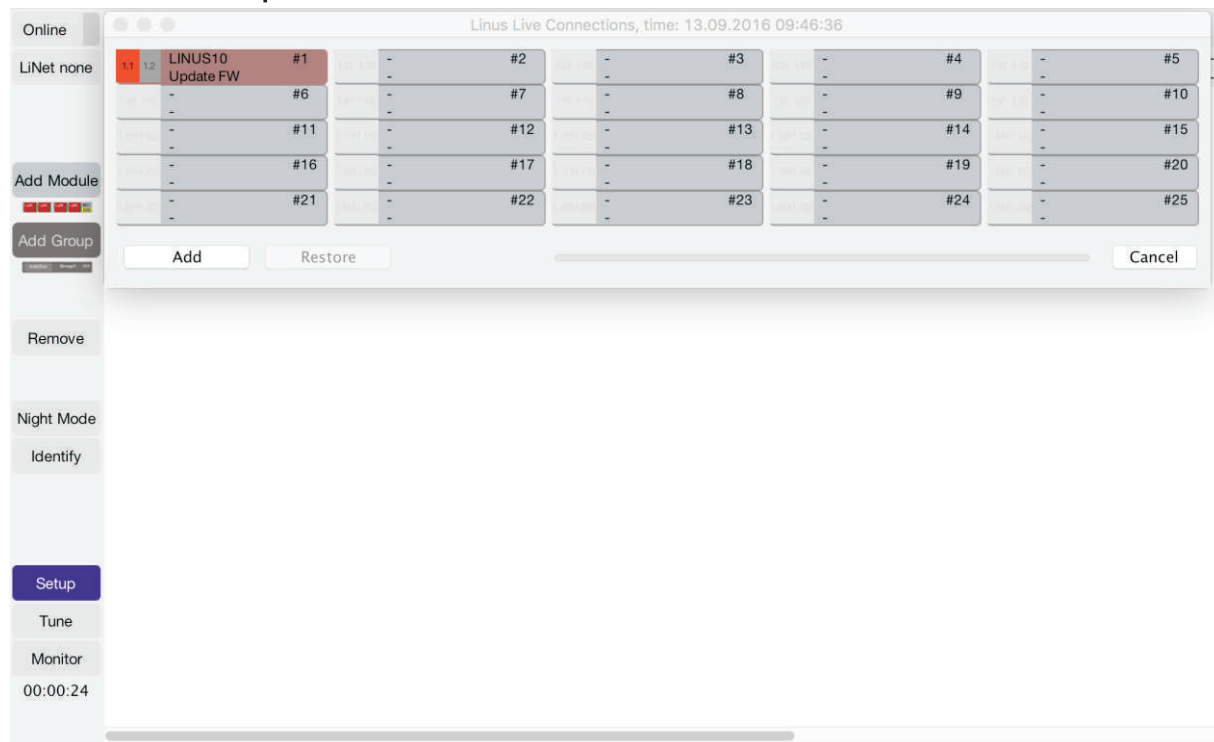




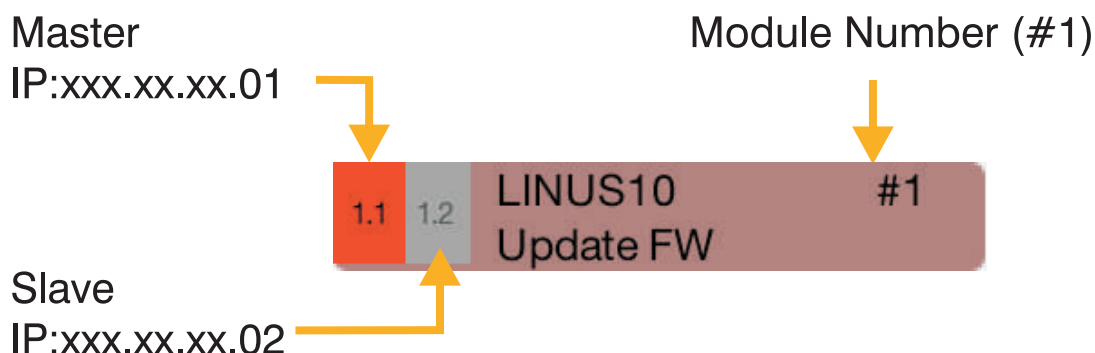
## 2. Scan Network

Start LINUS Live and Press  

Device Scan process will start:



You will find a clear indication of available units in the network.  
If the Scan result do not match with your hardware, check  
the setup of devices and network mentioned previously.



Example shows the initial connection of devices.  
LINUS Live includes a new FirmWare Version



Online

Linus Live Connections, time: 13.09.2016 09:46:36

1	2	3	4	5	6	7	8	9	10	11	12	13	14	15	16	17	18	19	20	21	22	23	24	25	
1.1	1.2	LINUS10	Update FW	#1	-	#2	-	#3	-	#4	-	#5	-	#6	-	#7	-	#8	-	#9	-	#10	-	#11	-
-	-	-	-	#6	-	-	-	-	-	-	-	-	-	-	-	-	-	-	-	-	-	-	-	-	
-	-	-	-	#11	-	-	-	-	-	-	-	-	-	-	-	-	-	-	-	-	-	-	-	-	
-	-	-	-	#16	-	-	-	-	-	-	-	-	-	-	-	-	-	-	-	-	-	-	-	-	
-	-	-	-	#21	-	-	-	-	-	-	-	-	-	-	-	-	-	-	-	-	-	-	-	-	

Buttons: Add, Restore, Cancel

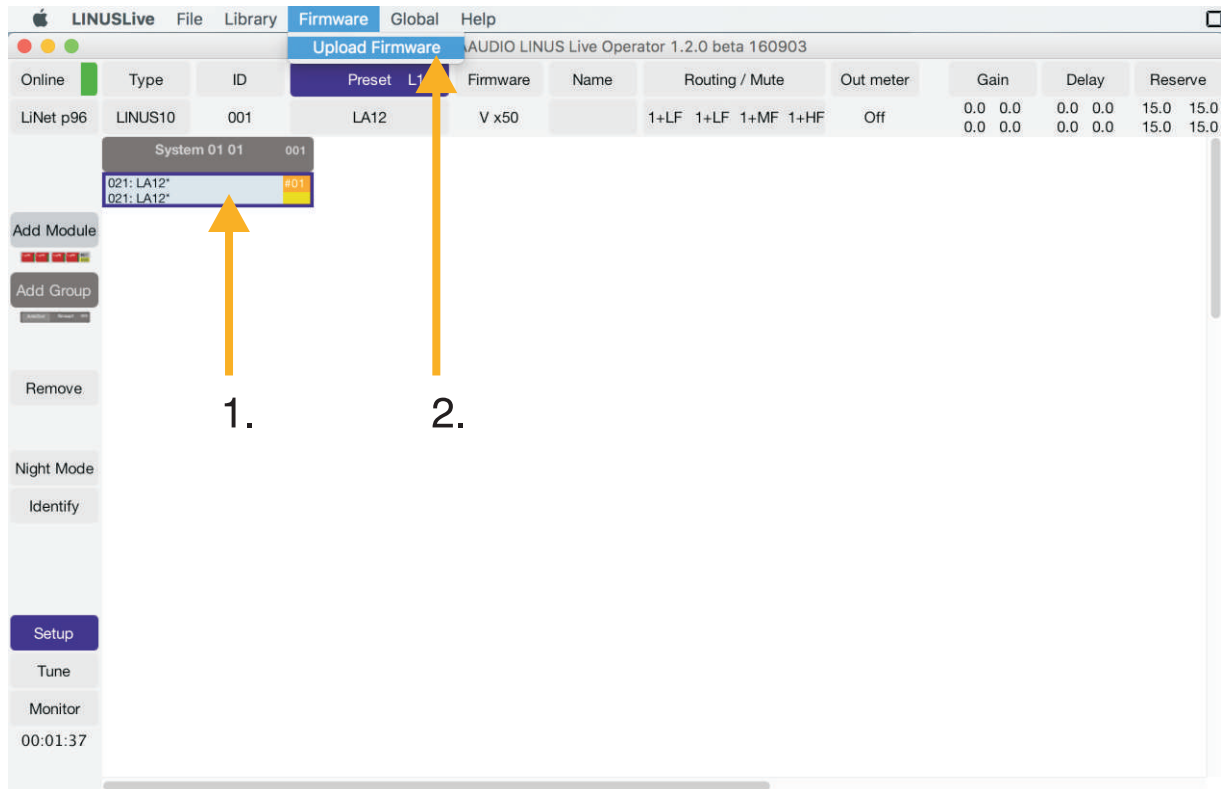
Left sidebar: Online, LiNet none, Add Module, Add Group, Remove, Night Mode, Identify, Setup, Tune, Monitor, 00:00:24





## 2. Firmware Update

- Select all modules (from the same type)
- Press „Firmware“ and „Upload Firmware“



Wait until the Firmware Upload is completed!  
LINUS Live will close and LINUS 10 will reboot automatically after the Firmware update has been completed.

Note!

Do not update more than 8x LINUS10 Units at any one time!



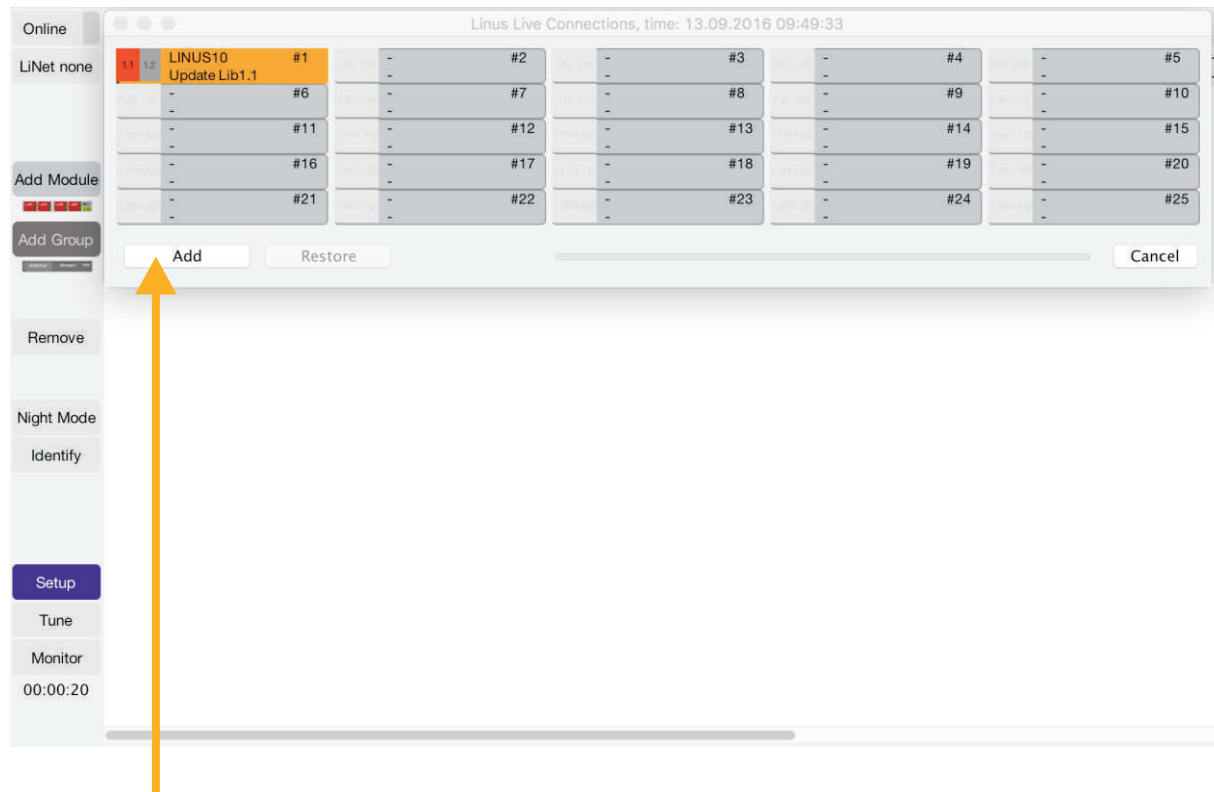


### 3. Scan Network/ Update

Start LINUS Live and Press  [Online](#)



The Device Scan process window informs you about a new (in Linus Live implemented) Preset Library for the scanned devices



You now need to upload the Preset Library of the connected Devices!  
Press „Add“ to include all modules into the setup space  
(Step 4. on next page)



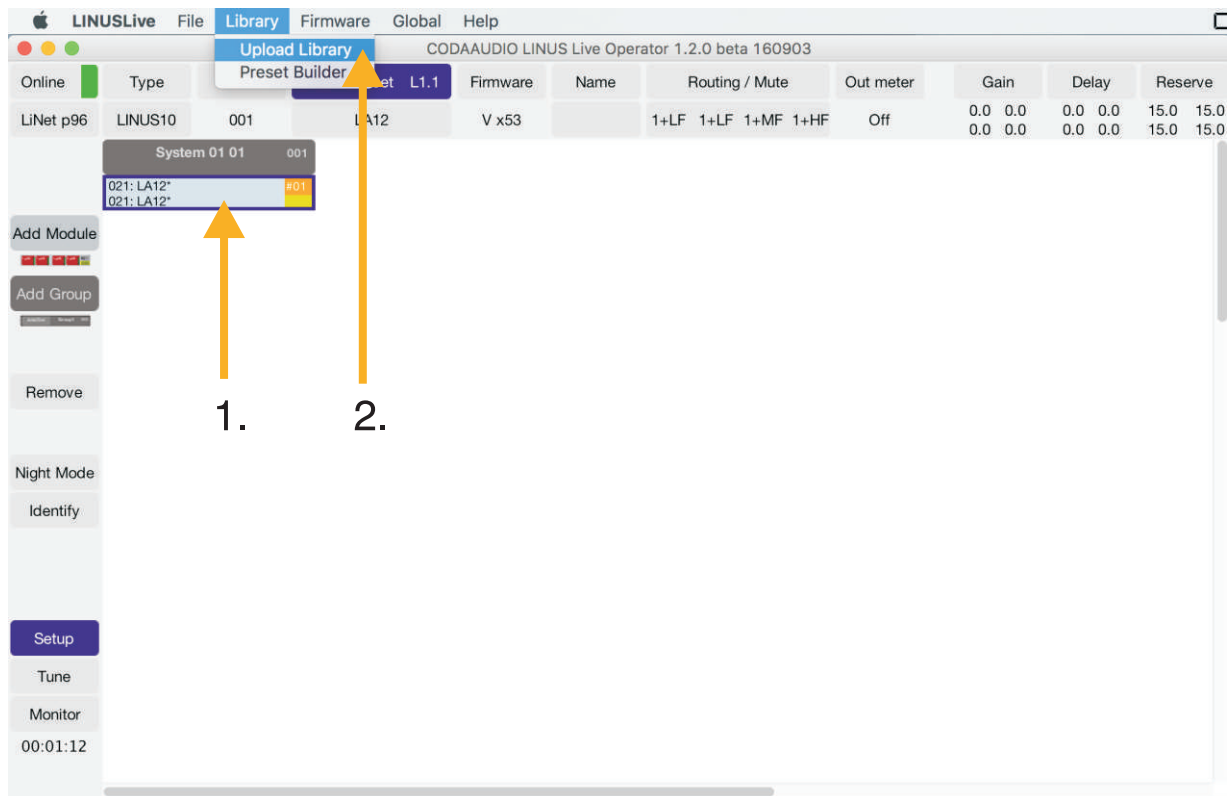




## 4. Library Update

-Select all modules (from the same type)

-Press „Library“ and „Upload Library“



Wait until the Library Upload is completed!

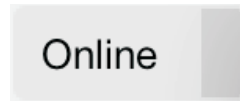
LINUS Live will close automatically after the Library Update has been completed.



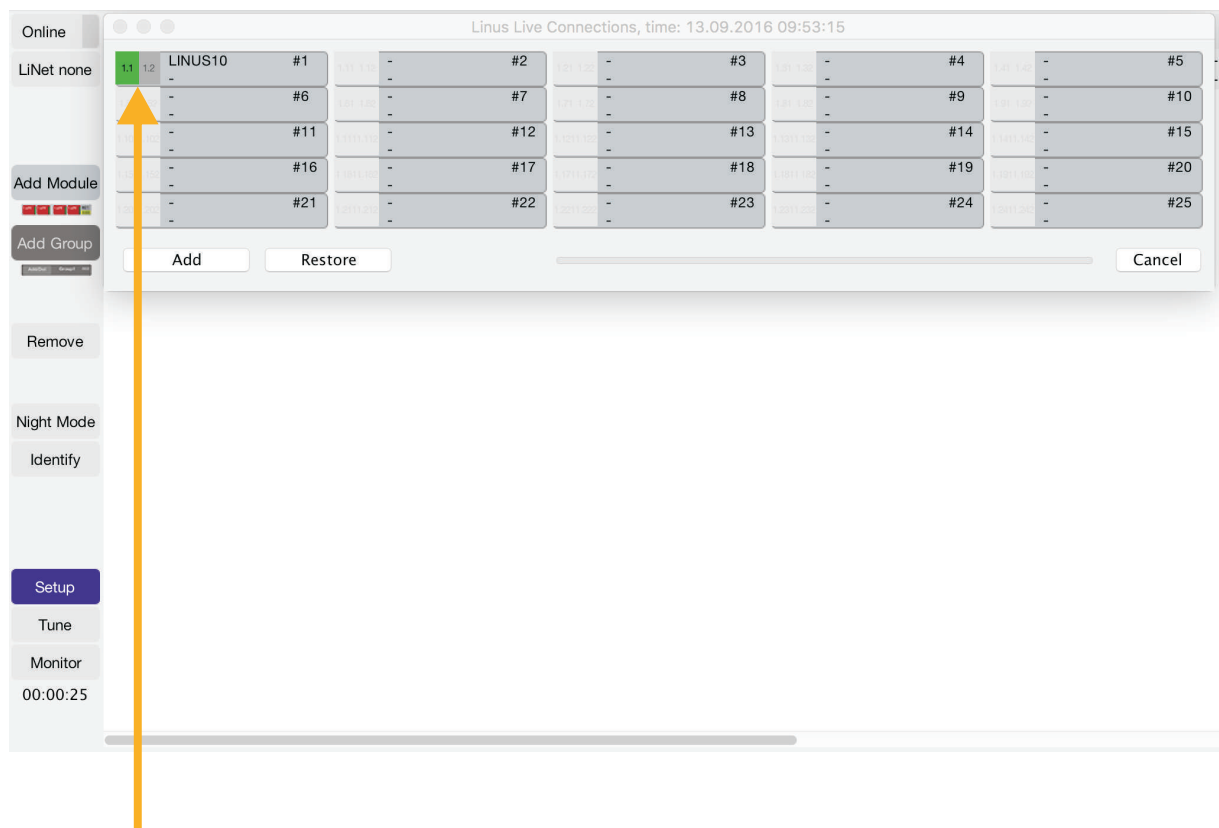


## 5. Updated Environment

Start LINUS Live and Press  [Online](#)



The Device Scan process window informs you about an updated Device environment



You can start now with LINUS Live operation.  
Please refer to the „LINUS Startup“ manual for further information



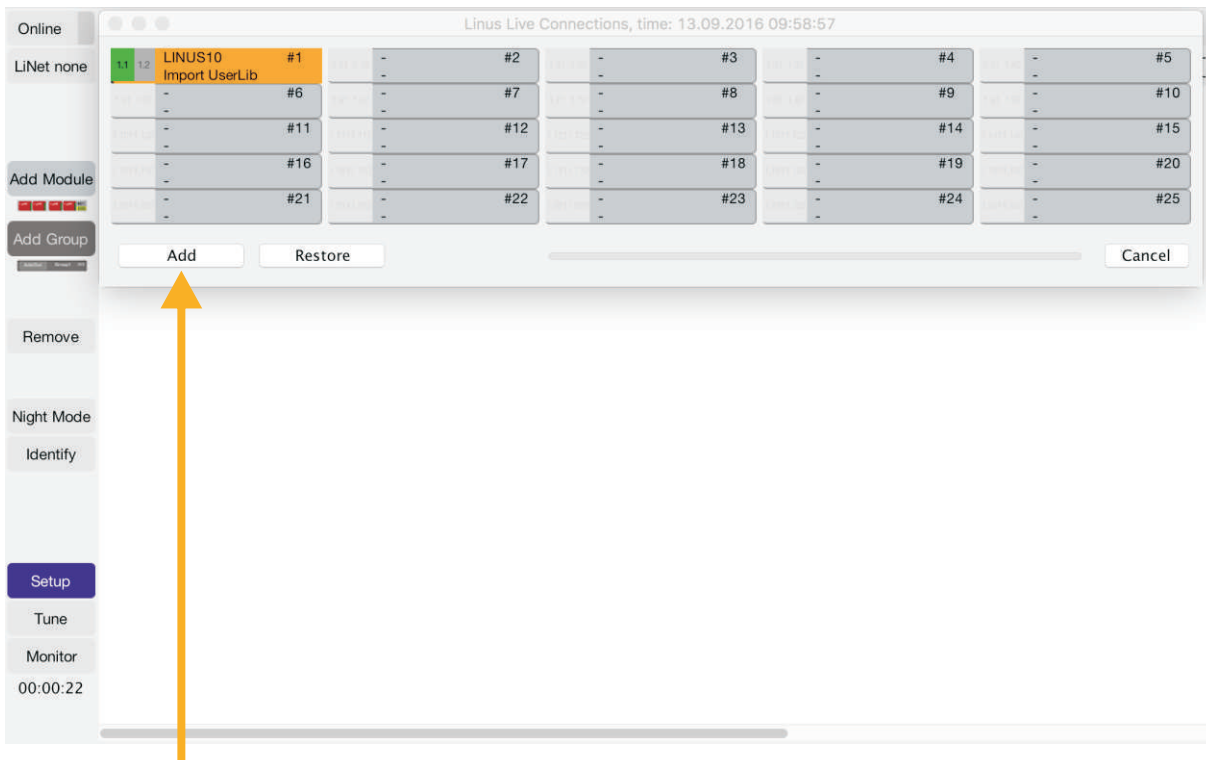


## 1. Scan Network/ Update

Start LINUS Live and Press  

Once you have designed a new Custom Preset with the Preset Builder Application, which is available in LINUS Live, you will need to upload the Preset Library on **all** the devices in your system setup!

The Device Scan process window informs you that the detected devices in the network have got a Mixed User Library



You now need to upload the Preset Library of the connected Devices!  
Press „Add“ to include all modules into the setup space  
(Please refer to Page 9.)

You will find further information for the Preset Builder application in the „Preset Builder Startup“.





## 2. Preset Builder Library export/ import

The Preset Builder application is automatically generates a new „Key“ file after saving the User Default Library and closing LINUS Live!

If any change is applied, you will generate a new „Key“ file.

The „Key“ files implement all necessary preset and speaker information. Example Key File: PresetLib 1.2 key1450245279632.zip

It's essential that the Modules, System Setup Files and LINUS Live operate on the same Key file!

Note!

We recommend to design the required user default preset combinations for all kinds of Units (LINUS10, LINUS 10C, LINUS 5C, LINUS Con) in one go and upload the Library on the units.

The Key Files are located in the following directories

Win:

C:\Users\xxx\LINUS Presets

Mac:

/Users/xxx/LINUS Presets

### Export

-Copy/ Paste the generated Key File on Your/ Target computer

### Import

-Use the Key Import function in the Preset Builder

7. Store Userbank

Default Userbank

Import Userbank



### **!!! IMPORTANT !!!**

Restart LINUS Live Software after Key File import and upload all Units in your System Setup



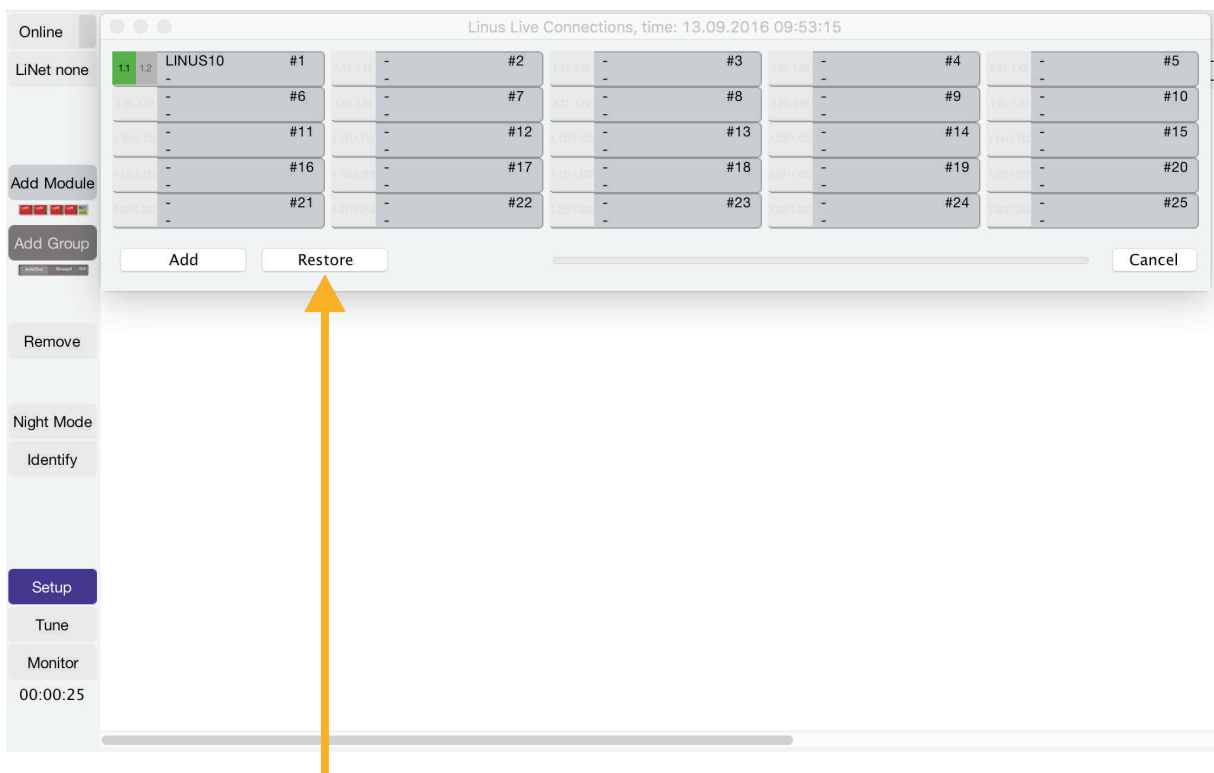


## 1. Restore a preconfigured System on one Computer

If you have designed a System online and have not changed any parameters or system configuration, you can restore the system at anytime on the same computer  
(e.g. if network has failed or in the case of power shut down)

Start LINUS Live and Press

Online



If the preconfigured configuration hasn't been changed you can restore the System setup!





## 2. Restore a preconfigured System on a different Computer

You need to import the used preset Lib Key from the original computer where the system setup has been created.

Please refer to Page 12, Import function

7. Store Userbank

Default Userbank

Import Userbank



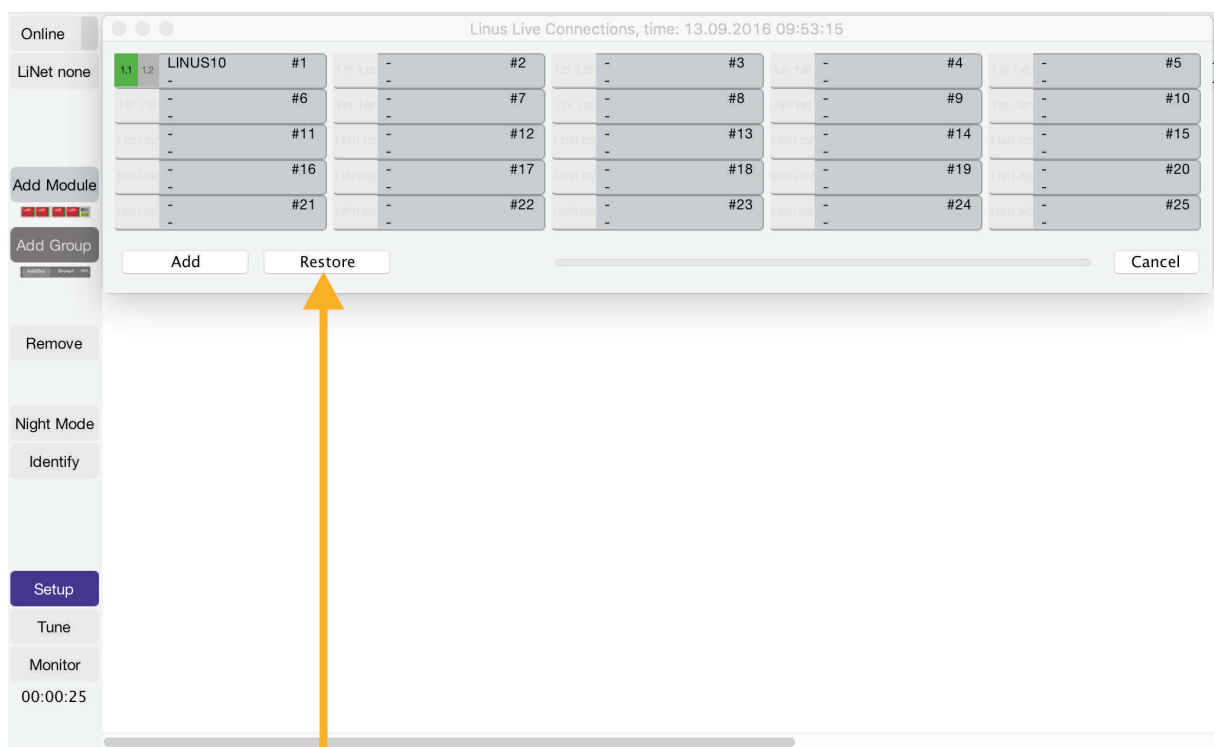
### **!!! IMPORTANT !!!**

Restart LINUS Live Software after Key File import

Start LINUS Live and Press



Online



Now you will be able to restore the system setup on a different computer.





## 3. Conclusion

Sync function is only possible if same key files are used on both Computer and LINUS hardware

